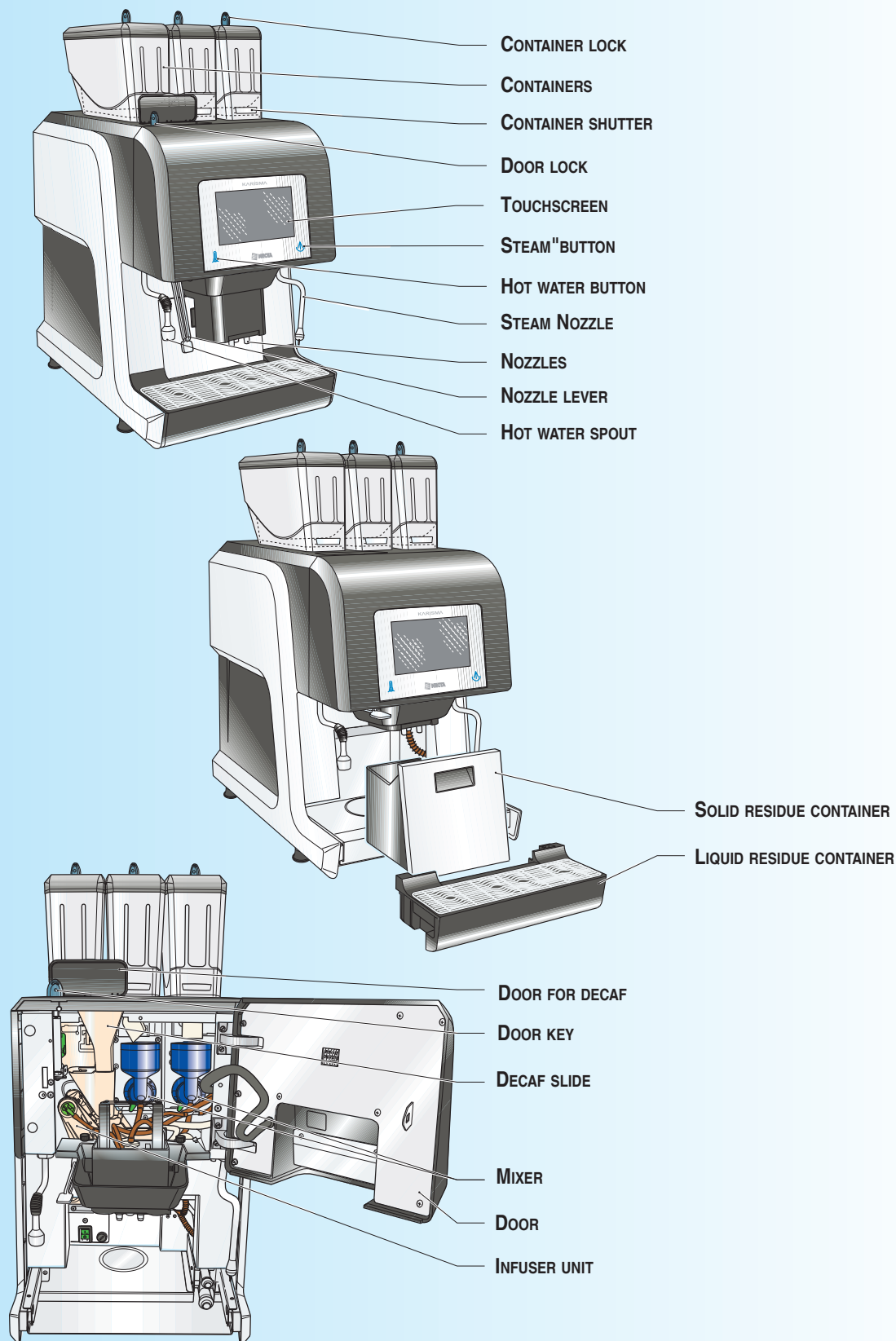


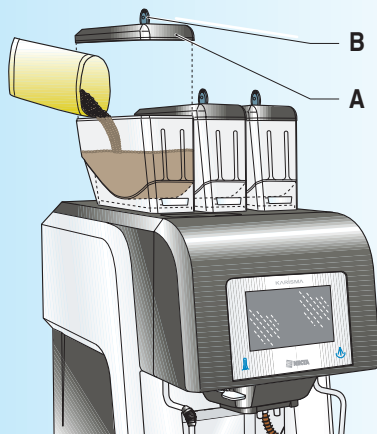
Here are some simple instructions for loading of the products and cleaning of your machine.


WARNINGS


PRODUCT LOADING AND CLEANING

LOAD

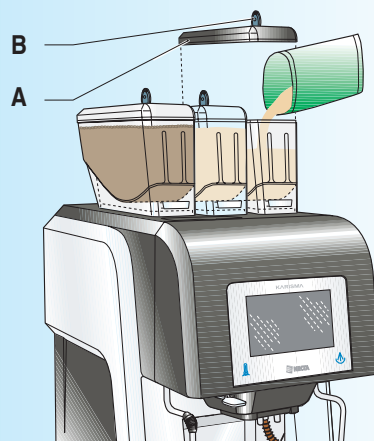
1



Coffee beans:

- Open the lid of the coffee container (A), using the key (B), if present.
- Load the coffee beans into the container.

2

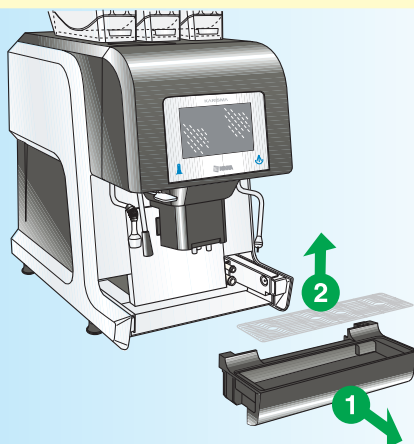


Instant products:

- Open the lid of the instant powder container (A), using the key (B), if present.
- Load the container without compressing the powder.

REGULAR CLEANING

1

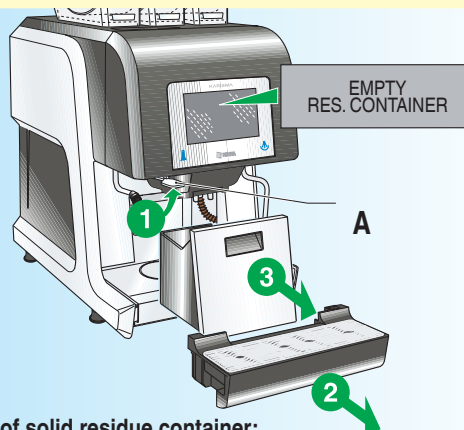


Cleaning of liquid residue container:

Periodically, you should empty and clean the liquid residue container from waste.

- Grab the container by the side and pull towards you.
- Remove the grid.
- Empty and wash the container.

2

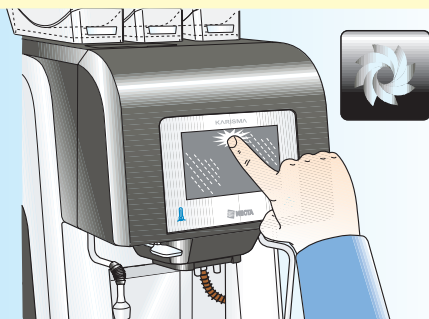


Cleaning of solid residue container:

When the display shows the message "EMPTY SOLID RES. CONT." you must empty the liquid and solid residue containers.

- Lift the nozzle by using the lever (A).
- Grab the liquid waste container by the side and pull towards you.
- Pull out solid residue container.
- Empty and wash the containers.
- Replace the containers.

3



WRITE DOWN THE WASH MENU PASSWORD.

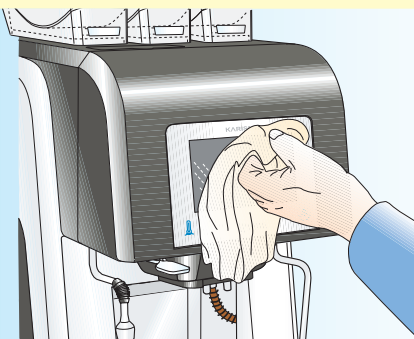


Touchscreen Cleaning:

Before cleaning the touch screen, hold down the area with the message to the user for 3 seconds.

- Press "WASH" and enter your password (if required).
- Press "TOUCHSCREEN CLEANING".
- The remaining cleaning time is displayed.

4



AVOID USING ABRASIVE CLEANERS CONTAINING SOLVENTS OR ALCOHOL.

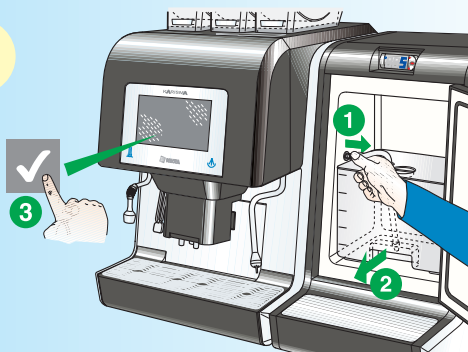
Touchscreen Cleaning:

Use a soft and dry cloth to clean the touchscreen with a light pressure.

REGULAR CLEANING

WASH THE CAPPUCCINO MAKER WITH DETERGENT

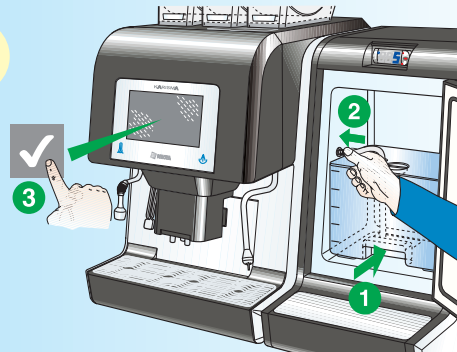
1



IF THE LIQUID WASTE CONTAINER HAS NO DRAINAGE, PLACE UNDER THE NOZZLES A TANK OF AT LEAST 3 LITER CAPACITY FOR COLLECTING WASHING RESIDUES.

- Remove the milk container hose.
- Remove the milk container.
- Press ✓ to confirm the operation.

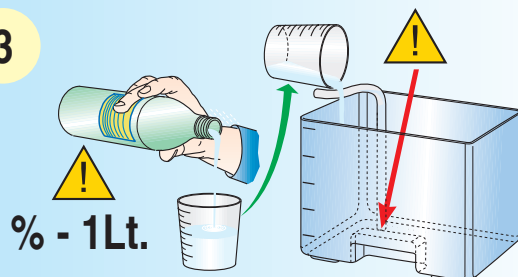
2



DO NOT USE THE MILK CONTAINER FOR CLEANING WITH DETERGENT. MAKE SURE THE DETERGENT CONTAINER HOSE IS FIXED ON THE BOTTOM OF THE CONTAINER ITSELF.

- Place the detergent container in the coolant module.
- Connect the detergent container hose.
- Press ✓ to confirm the operation.

3



% - 1Lt.

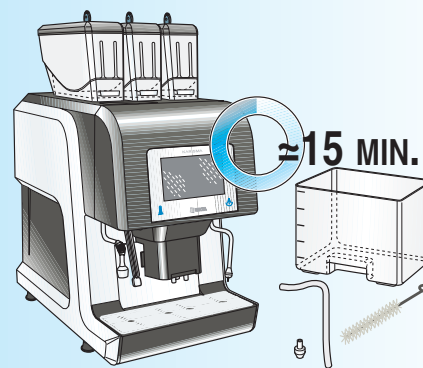


USE ONLY SPECIFIC PRODUCTS FOR CAPPUCCINO MAKERS*.

* TESTED PRODUCT: KAMARETA MILK CLEAN

- Add **only** the amount of detergent prescribed in the container, following the dosing instructions on the packaging of the product for a liter of water.
- Press ✓ to start the wash cycle.

4

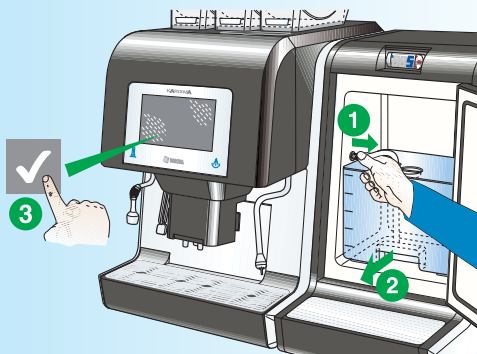


The machine automatically prepares the cleaning solution pouring hot water into the detergent container, it vacuums the solution and rinses the whole circuit.

Proceed with cleaning of the milk container and milk intake tube using brushes and/or swabs.

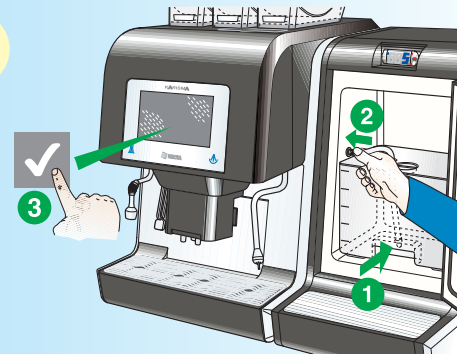
The washing of the cappuccino maker has a duration of 15 minutes.

5



- At the end of the cycle remove the detergent container hose.
- Remove the detergent container.
- Press ✓ to confirm the operation.

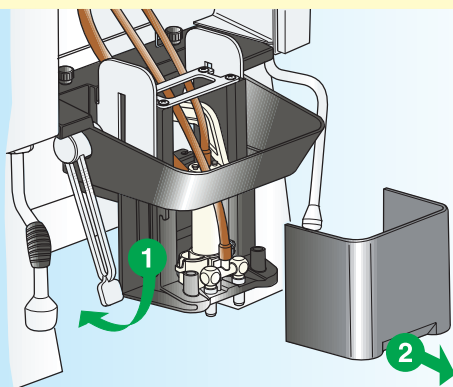
6



- Place the detergent container in the coolant module.
- Connect the milk container hose.
- Press ✓ to end.

MILKER NOZZLE CLEANING

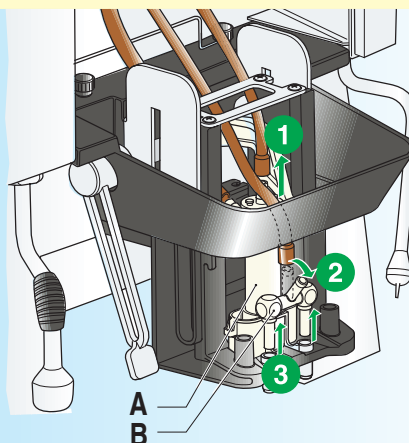
1



THE MILKER NOZZLE SHOULD BE REMOVED REGULARLY FOR CLEANING AND BEFORE WASHING THE CAPPUCCINO MAKER WITH DETERGENT.

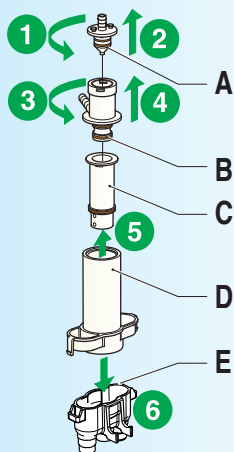
- bring the nozzle in lower position lowering the lever.
- Remove the cover of the nozzles.

2



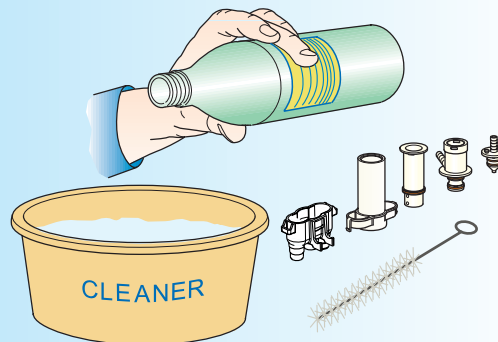
- Disconnect the hoses from the milker nozzle (A) and the flow divider nozzle (B).
- rotate the flow divider by 45° towards yourself, in order to lift it off the nozzle support
- Remove the flow divider and milk nozzle.

3



- Rotate and remove the part (A).
- Rotate and remove the part (B).
- Separate the parts (C), (D) and (E).

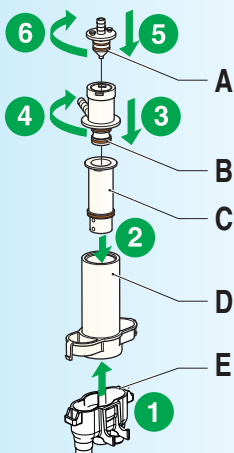
4



AVOID USING DETERGENT THAT IS TOO SCENTED. BE CAREFUL NOT TO DAMAGE THE SEALS OF THE NOZZLE.

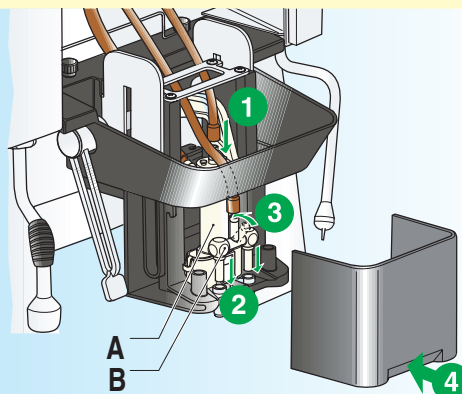
- Wash all the milker nozzle parts with a detergent solution (follow the dosage indicated by the manufacturer), being careful to mechanically remove the visible residues using brushes if necessary.
- Rinse and carefully dry the parts.

5



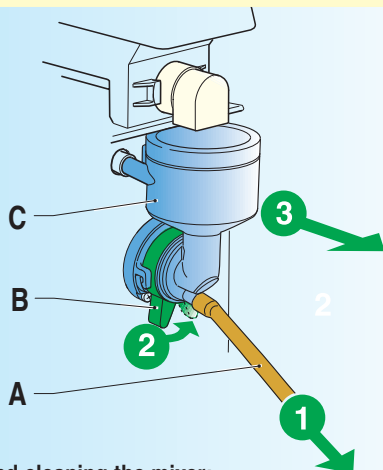
- Assemble parts (D) and (E) again.
- Reposition part (C) in part (D).
- Reposition and rotate part (B) to secure it.
- Reposition and rotate part (A) to secure it.

6



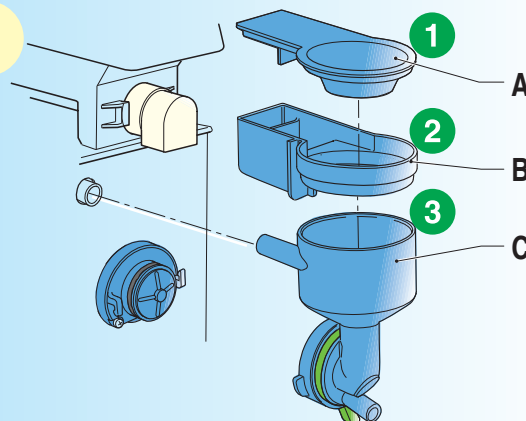
- Replace the milker nozzle (A).
- Re-connect the hoses to the milker nozzle and flow divider.
- Reposition the flow divider (B) and rotate it by 45° towards the machine in order to hook it to the nozzle support and fix the milker nozzle.
- Replace the cover of the nozzles.

COMPLETE CLEANING

1


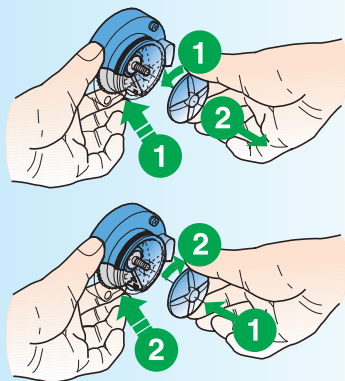
Removing and cleaning the mixer:

- Disconnect hose (A) from the mixer.
- Rotate lever (B) anticlockwise.
- Remove the mixer (C).

2


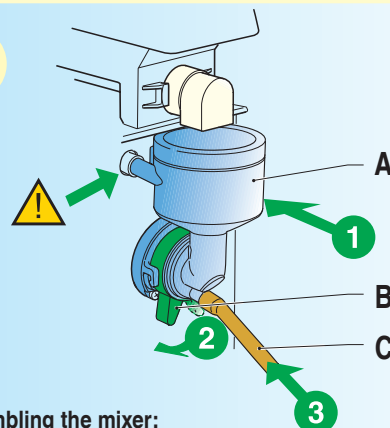
Removing and cleaning the mixer:

- Separate all the components of the mixer: powder funnel (A), powder tray (B) and water funnel (C).

3


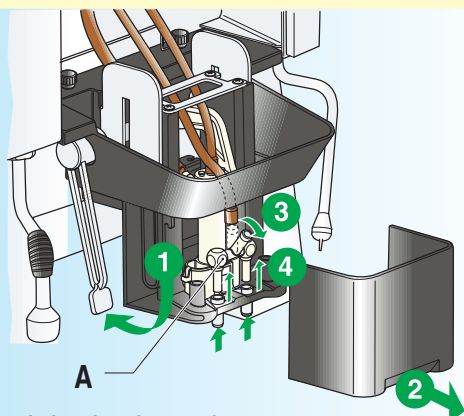
Removing and cleaning the mixer:

- Unscrew the mixer fan blocking the geared disk mounted on motor-mixer with a finger.
- Wash all the mixer components taking care to mechanically remove visible residues and films using swabs or brushes, if necessary
- Thoroughly rinse all components of the mixer.
- Reposition the fan blocking the geared disk mounted on motor-mixer with a finger.

4


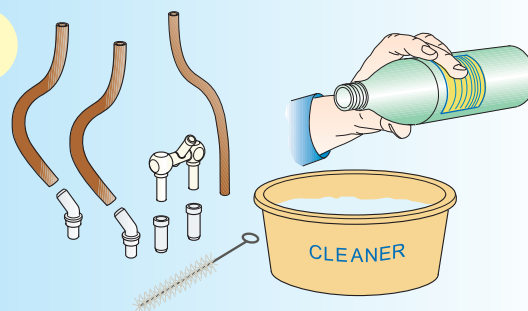
Assembling the mixer:

- Reassemble all the mixer components (A) and pay attention to properly engage the water funnel.
- Rotate lever (B) clockwise to fix the mixer to the machine.
- Reconnect hose (C) to the mixer.

5


Removing and cleaning the nozzles:

- bring the nozzle in lower position lowering the lever.
- Remove the cover of the nozzles.
- Disconnect the hoses from the nozzles of the instant beverages and flow divider nozzle (A).
- rotate the flow divider by 45° towards yourself, in order to lift it off the nozzle support
- Remove the flow divide and the instant beverages nozzles.

6


Cleaning the nozzles:

- Wash all the components taking care to mechanically remove visible residues and films using swabs or brushes, if necessary
 - Thoroughly rinse the nozzles and reassemble them on the nozzle support in reverse order.
- For steam and/or hot water spouts, use a cloth soaked in detergent solution to remove any residue.

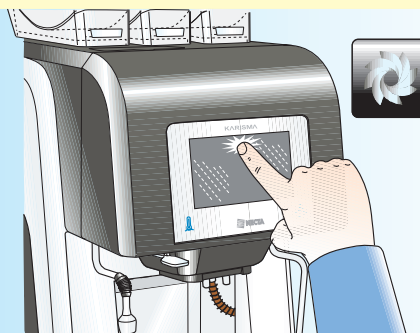
AUTOMATIC WASH

1



The wash cycles do not replace the need to disassemble the components for regular sanitization.
For machines That do not have a drainage system for the residual liquid containers, it is recommended to place a container under the nozzle with a capacity of at least 3 liters.

2



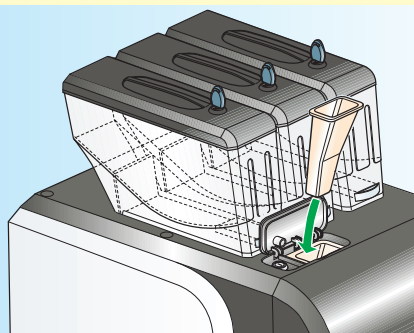
WRITE DOWN THE WASH MENU PASSWORD.



Access to the wash menu:

- Hold down the area with the message to the user for 3 seconds.
- Press "WASH" and enter your password (if required).
- Choose from the menu the type of cleaning to be performed.

3

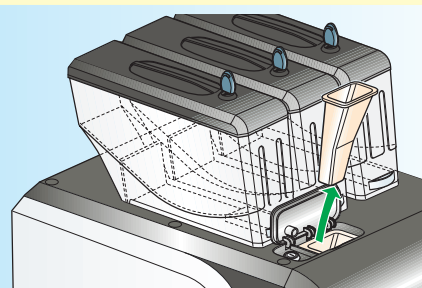


Infuser unit wash:

- Open the door and introduce the detergent slide into the decaf slide.

The detergent slide is supplied by default with the machine and should only be used for washing of the infuser unit.

4



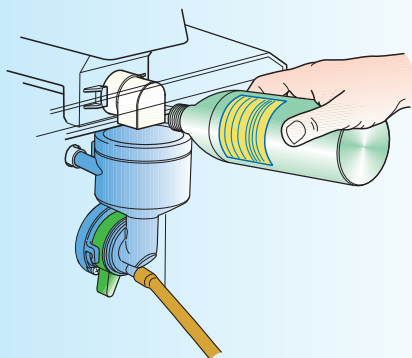
USE ONLY SPECIFIC PRODUCTS FOR COFFEE MAKERS*.

*** TESTED PRODUCT: KAMARETA CAFE**

Infuser unit wash:

- Pour the detergent into the slide, following the dosing directions on the detergent packaging.
- Close the decaf door.
- Start the infuser unit wash cycle.
- At the end of the cycle perform the rinse cycle of the infuser unit to eliminate possible residues of detergent

5

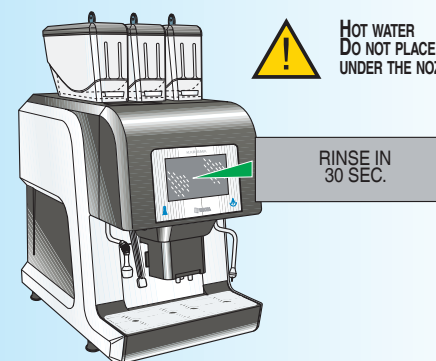


Mixer wash:

- Pour the detergent into the mixer, following the dosing directions on the detergent packaging.
- Start the mixer wash cycle.

At the end of the wash cycle it is recommended to rinse the mixer to remove any remaining detergent.

6



**HOT WATER
DO NOT PLACE YOUR HANDS
UNDER THE NOZZLES**

**RINSE IN
30 SEC.**

Milker rinse:

Periodically, the machine performs a rinse cycle of the milker nozzle. Before starting the rinse cycle, the machine displays the 30 second countdown.

Remove all objects from the dispensing area and place a bowl to collect the wash residue